



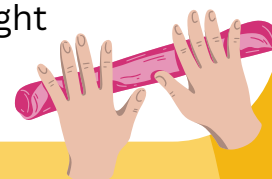
RECIPE IDEAS FOR #42 The Rough and the Smooth



Cooked Playdough

- 2 cups of plain flour* (it does not matter what size cup you use as long as you keep it a consistent size)
- ¾ cup of table salt
- 2 teaspoons of cream of tartar (this is optional but keeps it fresher)
- 2 cups of warm water
- 2 tablespoons of vegetable oil
- Food colouring (optional)

1. Stir together the flour*, salt and cream of tartar in a large pan.
2. Add the water, food colouring and oil.
3. Cook over a low heat, stirring constantly. Continue to stir until the dough has thickened and begins to form into a ball.
4. Remove from heat and allow to cool slightly and then knead until smooth. Store in an airtight container.



Ice age



- Cornflour
- Ice cubes
- Food colouring

1. Sprinkle a small amount of cornflour across the bottom of your play area (using a tray will minimise mess).
2. Add a pile of ice cubes.
3. Spray the ice cubes with food colouring diluted in a suitable bottle (red and yellow create a volcanic atmosphere, blue and green produce a more aquatic environment), add figures of choice and let the stories begin.

Sand mousse

- 1 cup sand
- 1 cup of water with 1 spoonful of washing up liquid.

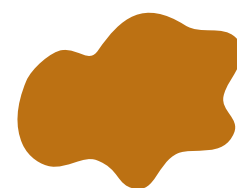
1. mix dry sand with washing up liquid and water to make a squidgy swamp like texture.
2. Add pebbles, stones, moss and wood to create a prehistoric world in which dinosaur figures can squelch through the swampy mousse with good effect.



Non-Newtonian liquid

- Cornflour
- Water

1. Mix 2 parts cornflour with 1 part water, you might need to use your hands to mix it.
2. Can you snap, squeeze and push the gloop? Can you make a print in it?
3. Talk to your child about how it feels. How does it change? It is neither a solid or a liquid, but behaves like both.



Mud play

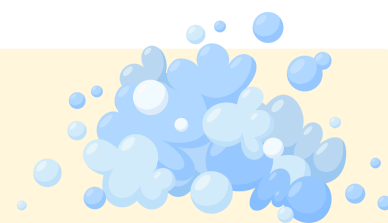


- Mud or soil
- Water
- Pebbles, pinecones, flowers or leaves

1. Mix mud from the garden or top soil with water.
2. Add natural resources such as pebbles, pinecones and flowers to help your child explore and create. They might want to create a digger land or a mud pie - whatever their imagination fancies.

Shaving foam

- Sensitive shaving foam.
- Tray
- Powder paint
- Paper



1. Spray foam onto table or tray.
2. Support your child to draw patterns or letters with fingers. Add powder paint for colour, mix colours up. Take prints by putting paper on the top.

Links to the EYFS

- Personal, Social and Emotional Development
- Physical Development
- Communication and Language
- Expressive Art and Design
- Understanding the World
- Mathematics

Characteristics of Effective Learning

- Active Learning
- Creating and Thinking Critically

